

I Brief Introduction to Cash Drawer

1 Line Slot

Run the connecting wires on the box through signal wires in the slot orderly.

2 Signal Line

Get drive signal from receipt printer or POS machine to open the cash drawer.

3 Paper Money Clip

It is used to press down paper money to prevent it from warping.

4 Coin Slot Separation Sheet

A separation sheet used for separating coins, and upon being removed, two slots will become a large slot for coins.

5 Paper Money Storage Slot

The place to store paper money.

6 Coin Storage Slot

The place to store coins. You can adjust the number of coin slots according to your needs.

7 Three-Stage Lock Head

It supports manual opening, electric driving opening and locking functions.

8 Key

The cash drawer can only be opened with key with the same number as that of the lock head.

9 Large Bill Storage Slot

The lower part of the coin storage slot is large bill storage slot. After taking out the coin storage slot, you can see the large bill storage slot.

II Instructions on Unlocking the Cash Drawer

1 Completely Locked

You can insert matching keys into keyhole and rotate to the completely locked position, then the cash drawer will be locked and cannot be opened.

2 Electric Driving Opening

You can insert the matching key into keyhole and rotate to electric driving opening position and then install the signal line by opening the back panel baffle and plug the signal RJ12 connector into the driving device (e.g. receipt printer and POS machine).

3 Opening with Key

You can insert the matching key into keyhole and rotate to manual opening position to open the cash drawer. If you cannot rotate the key to the manual opening position, please check whether the number on the key is the same as that on the lock head.

Manufacturer: Shanghai Sunmi Technology Co., Ltd.
Address: Room 605, Building 7, Chuangzhi Tiandi, No. 388, Songhu Road, Yangpu District, Shanghai

Table for Names and Content Identification of Toxic and Hazardous Substances in this Product

Part Name	Toxic or Hazardous Substances and Elements					
	Pb	Hg	Cd	Cr(VI)	PBB	PBDE
Circuit Board Component	X	○	○	○	○	○
Structural Component	○	○	○	○	○	○
Packaging Component	○	○	○	○	○	○

○: indicates that the content of the toxic and hazardous substance in all homogeneous materials of the component is below the limit specified in SJ/T 11363-2006.

X: indicates that the content of the toxic and hazardous substance in at least one homogeneous material of the component exceeds the limit stipulated in SJ/T 11363-2006. However, as for the reason, because there is no mature and replaceable technology in the industry at present.

The products that have reached or exceeded environmental protection service life should be recycled and reused according to the Regulations on Control and Management of Electronic Information Products, and should not be discarded randomly.

Basic Parameters

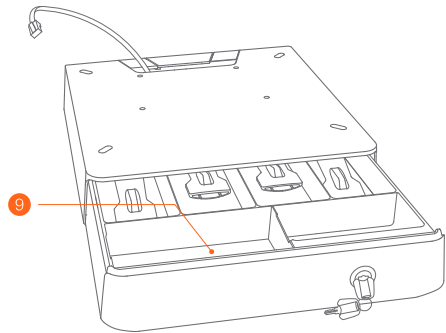
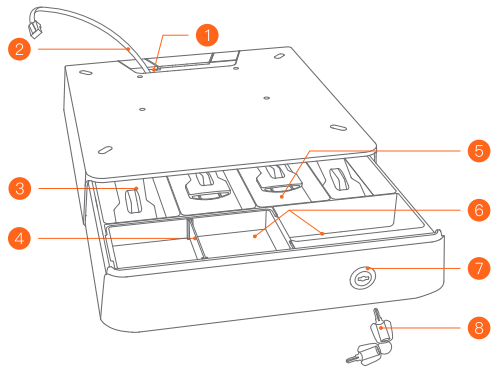
Nos. of Paper Money Storage Slots	4 slots for paper money and 1 slot for large bill
Nos. of Coin Storage Slots	Max 3 coin storage slots
Service Life	≥ 1 million times
Lock Head	Equipped with number, three-stage switch lock supports manual opening, electric driving opening and locking, cash drawer can only be opened with key by the same number.
Interface	RJ12
Cash Drawer Size	317mmx332mmx72mm
Cash Drawer Weight	~2.8 Kg
Driving Voltage	DC 9V-24V
Working Temperature/Humidity	0°C~45°C / 30%~85%
Storage Temperature/Humidity	-20°C~60°C / 10%~90%

Disclaimer

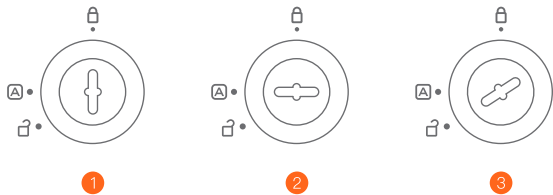
Due to product updating, some details of this document may not conform to the product. Please refer to the real product. The right of interpretation of this document belongs to our company. We reserve the right to amend this manual without prior notice.

NC010

I



II



FCC Statement

Any Changes or modifications not expressly approved by the party responsible for compliance could void the user's authority to operate the equipment.

This device complies with part 15 of the FCC Rules. Operation is subject to the following two conditions:

- (1) This device may not cause harmful interference, and
- (2) This device must accept any interference received, including interference that may cause undesired operation.

Note: This equipment has been tested and found to comply with the limits for a Class B digital device, pursuant to part 15 of the FCC Rules. These limits are designed to provide reasonable protection against harmful interference in a residential installation. This equipment generates, uses and can radiate radio frequency energy and, if not installed and used in accordance with the instructions, may cause harmful interference to radio communications. However, there is no guarantee that interference will not occur in a particular installation. If this equipment does cause harmful interference to radio or television reception, which can be determined by turning the equipment off and on, the user is encouraged to try to correct the interference by one or more of the following measures:

- Reorient or relocate the receiving antenna.
- Increase the separation between the equipment and receiver.
- Connect the equipment into an outlet on a circuit different from that to which the receiver is connected.
- Consult the dealer or an experienced radio/TV technician for help.